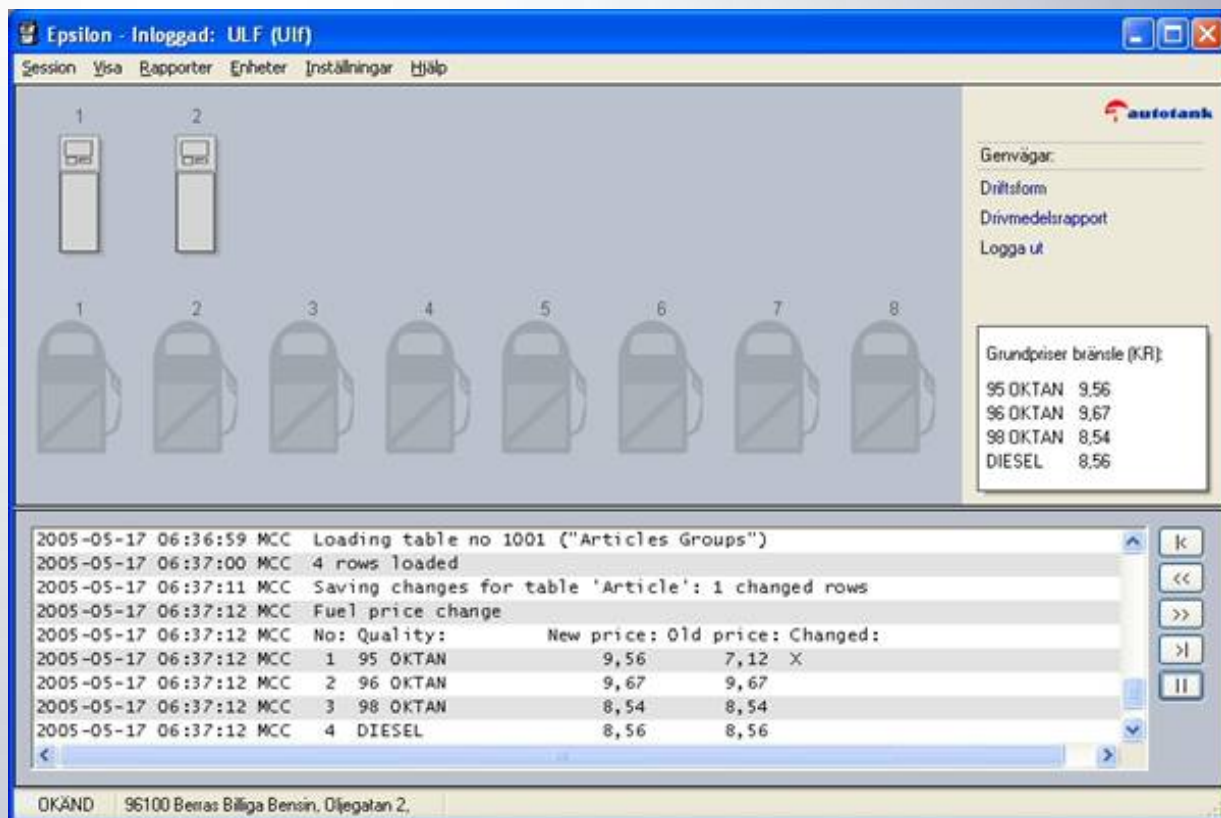


Autotank launches EPSILON, the new site controller for service stations.

The site controller is the heart of a service station. It controls forecourt equipment such as dispensers, payment terminals, price signs, tank gauges etc...

Epsilon handles EFT transactions both to banks and oil companies. It controls the user dialogue in the payment terminals to enable a fast and convenient way of paying for the fuel.



Epsilon Set-up and Supervision (ESS) has completely new graphical user interface. ESS is intuitive and easy to learn. It is developed under Microsoft's .NET platform in C# with Microsoft Visual Studio and using the .NET framework. Which makes it easy to amend new functions and to adjust to different users.

There are about 10 different subsystems running at the same time in Epsilon. For example subsystems for handling of dispensers, payment terminals, host communication. All these subsystems except ESS mentioned above are written in Microsoft Visual Studio. C++.

The database in Epsilon is based on Microsoft MSDE. It is a high performance SQL database.

Epsilon is now (July 2005) installed at some pilot sites. Epsilon will be commercial available spring 2006.